

IML labeling

We tasted different types of texture of IML lables:

- glossy
- "orange-peel"
- transparent
- soft-touch ("suede")
- metallized
- with barrier effect (a barrier from O2 oxygen, a barrier from light of UV)
- 2-side label (for transparent pails)
- turning-away label

See on foto - **soft-touch** label ("suede") - The package giving a pleasant tactile feelings



IML examples

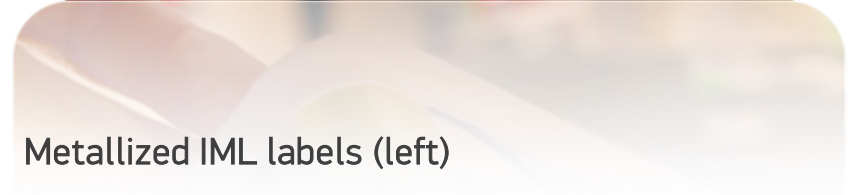
Barrier IML label
(O₂ barrier), including contact-transparent

UF-barrier IML label (below)
Useful for creamy products to keep them
fresh and aroma



IML examples

Super-glossy label (right)



Metallized IML labels (left)

Useful for seal-off food containers of various capacity.

Ice-cream wins the competition.



IML examples

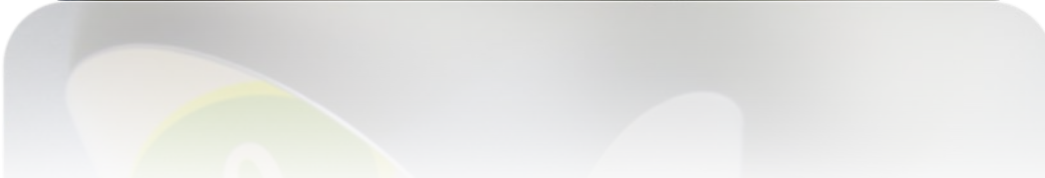
Transparent unusual-shaped container with metallization on a glossy material of an IML label. Is suitable both for desserts, and for multi-colored sugar candies.



IML examples

Turning-away label.

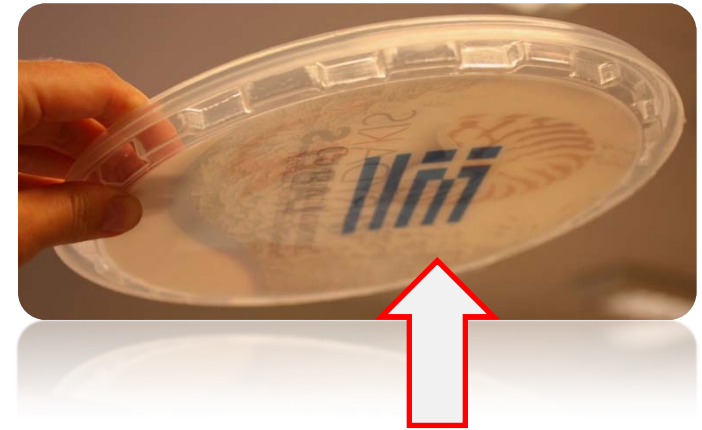
Great promo opportunities & lots of text & placing the recipes etc.



IML examples

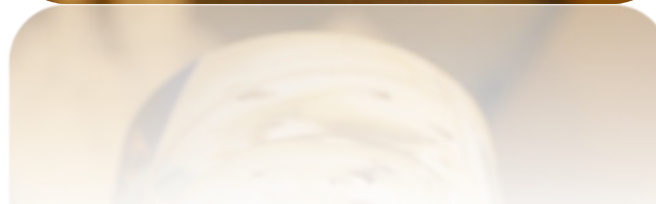
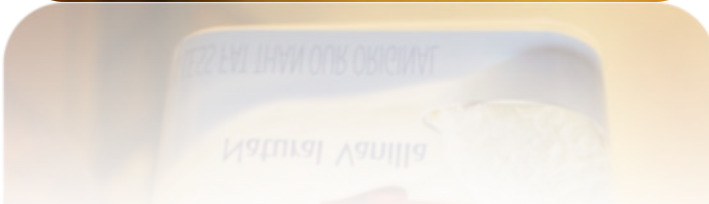
2-side IML label

Allows to place additional information on the back of transparent covers, including recipes, promo conditions etc.



ICE-Cream Ideas

Quadro Vk-3 Pail 1500 ml (left) and round V-19 pail 800 ml (right), IML-decorated (mass-market series).



Sweet ideas

Transparent square buckets with IML on the pail and lid.

Complete or “window” label (transparent areas on a label).

a) Square shape is good in logistics

b) Family packs.

